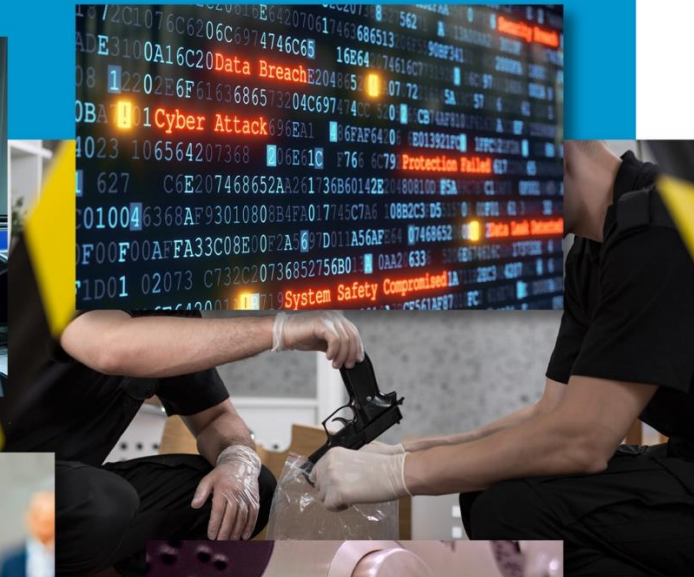




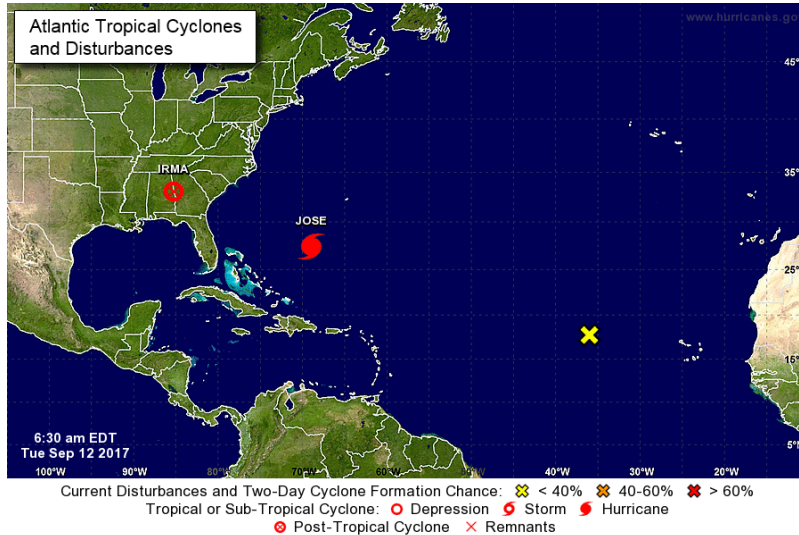
# INTELLIGENCE & THREAT BRIEFING



Irma Situational Update  
September 12, 2017 – 10:00am



## Irma – Forecast Update



As of 6:00am EDT this morning, Irma is a Post-Tropical Cyclone bringing moderate rain to parts of the southeastern United States and the Tennessee and Ohio Valleys.

- Irma is located 65 miles southwest of Atlanta, Georgia and 100 miles to the east-southeast of Birmingham, Alabama with maximum sustained winds of 25 mph.
- Flash flood warnings and advisories are ongoing in scattered areas throughout the southeast.
- Flash flood watches continue to be in effect for the southern Appalachians.
- Current hazards include rain accumulations of 1 to 3 inches across the region, with 5 inches in some spots in North and South Carolina. Some river flooding is possible across Georgia and eastern Alabama.

As Irma has lost all tropical cyclone characteristics, the National Hurricane Center has ceased active monitoring of the storm. This will be our last weather forecast for Irma.



## Executive Summary & Analysis

Irma is now a post-tropical cyclone that will dissipate later today, raising the curtain on a long response and recovery cycle that will likely last for years.

The impacts of Hurricane Irma are starting to become clear across the southeastern United States as city, county, and state officials begin formal assessments of damage to critical infrastructure and search for survivors that may need immediate assistance.

In most impacted areas, including the southeast, Puerto Rico, and the US Virgin Islands, power is a significant challenge that will be a major obstacle to recovery efforts, particularly for the private sector. In discussions public and private, the electrical industry and US Department of Education are describing the restoration effort as “more of a rebuild than a restoration” and that it will take “days and weeks” rather than “hours and days”. While some private sector businesses have already reopened in the impacted areas, they have generally been larger companies with well-built stores, on-site generators, and significant investments in crisis management and business continuity capabilities.

In the US Virgin Islands and Puerto Rico, transportation and drinking water are additional challenges that are high priorities for emergency management. Getting around the islands for restoration efforts is challenging due to debris and downed power lines. FEMA is providing drinking water stations across the islands to alleviate the short-term needs.

The coordination between local, county, state, and federal government has been exemplary throughout the preparation and response to Irma. In particular, improved communication and collaboration with the private sector has greatly enhanced the ability of companies to prepare in advance of the storm, manage expectations through response, and quickly return their businesses to operations as critical infrastructure is restored.

We expect to have a clearer view of impacts in the southeast as today unfolds.

CONFIDENTIAL

Information Cutoff: September 12, 2017 – 9:00am

Copyright © by Bryghtpath LLC – All Rights Reserved. Bryghtpath © and the Bryghtpath logo are registered trademarks of Bryghtpath LLC in the United States and other countries.



## Situational Update

### *Florida*

The State of Florida remains in a state of emergency with the State Emergency Operations Center at full activation. There is significant flooding in some portions of the state, particularly in Jacksonville.

We are beginning to see the private sector restart operations where possible today. For example, Lowe's has re-opened all sites in Florida with many on generator power.

- **Airports:** Most airports remain closed across Florida to commercial traffic, but plans are being put into place for full restoration of services.
  - Miami International has been open only for emergency & military operations. The airport plans to open late morning on 9/12.
  - Orlando International remains restricted to emergency & military operations.
  - Tampa International plans to reopen by 9/13.
  - The following airports are at normal operations for all traffic: Tallahassee, Pensacola, Page Field, and Palm Beach.
- **Curfews:** Curfews remain in place for many Florida cities and counties.
  - Coral Springs: 8pm – 6am
  - Deerfield Beach: 4pm – 6am until further notice
  - Fort Lauderdale: 10pm – 5am
  - Hillsboro Beach: 4pm – 6am until further notice
  - Homestead: 8pm – 6am
  - Key Biscayne: 7pm – 7am
  - City of Miami: 8pm – 7am
  - Miami-Dade County: 7pm – 7am until further notice
  - North Miami Beach: 8pm – 8am

We recommend checking with local officials to verify curfew timing as there is not a central registry of curfews.

CONFIDENTIAL

Information Cutoff: September 12, 2017 – 9:00am

Copyright © by Bryghtpath LLC – All Rights Reserved. Bryghtpath © and the Bryghtpath logo are registered trademarks of Bryghtpath LLC in the United States and other countries.



- **Hospitals:** 33 hospitals remain closed (-16 from yesterday), 204 total healthcare facilities remain evacuated.
- **Power:** Power is offline for approximately 64% of Florida.
  - 5.1 million accounts (representing nearly 11 million people) currently do not have power.
  - Power restoration is a significant priority in the region and will likely be the greatest challenge to critical infrastructure restoration and economic recovery.
- **Ports:** Port assessments are currently being conducted by the United States Coast Guard throughout the impacted region. A very high priority has been placed on port restoration in order to enable delivery of response and recovery supplies, particularly fuel, via ship.
  - Port Canaveral has early indications that there is no major damage to the port, final damage assessments are underway. A reopening date is undetermined.
  - Port Jacksonville expected to reopen late in the date on 9/11, but confirmation has yet to be received.
  - Port Pensacola is open to all traffic.
  - Port Tampa Bay has minimal damage to the port. Once navigable waterways have been assessed, vessel traffic will be able to use the port.
- **Rail:** Most rail traffic into Florida was halted prior to landfall. Rail traffic is not expected to resume until 9/13 or later.
  - Norfolk Southern and CSX are holding more than 1,000 loads for Florida and South Georgia across the system pending restoration.
- **Shelters:** 502 shelters are currently operating in Florida with 119,261 occupants



## Georgia

Georgia remains under a state of emergency with mandatory evacuations still in place for six counties east of I-95. The State Emergency Operations Center is at full activation.

- **Healthcare:**
  - 32 medical facilities, including 13 hospitals, are evacuated
- **Gas/Fuel:** There is a significant fuel shortage throughout the State of Georgia.
  - Efforts are being made to refuel stations throughout the state today.
  - Pipelines are operating normally.
  - FEMA is establishing a refueling point near Tifton, Georgia on I-75, but fueling will be restricted to first responders moving through the area.
- **Power:**
  - Approximately 1,033,624 accounts are without power in Georgia
- **Shelters:** 34 shelters are open with 4,860 occupants presently.

## Puerto Rico

The Puerto Rico Emergency Operations Center is at Full Activation. 3 fatalities have been reported following Hurricane Irma's landfall in PR.

- **Airports:**
  - San Juan airport is open to all traffic.
- **Power:**
  - Approximately 359,230 accounts are without power in Puerto Rico, a significant improvement over yesterday (-100,000)
- **Shelters:** 7 open with 171 occupants, a slight increase in the last 24 hours
- **Water:** 61,980 people in need of drinking water.
  - Drinking water stations are being setup throughout the island.





## *South Carolina*

South Carolina's Emergency Operations Center is at full activation. Mandatory evacuation orders remain in place for the Barrier Islands.

- **Healthcare:**
  - 140 medical facilities are evacuated.
- **Shelters:** 24 shelters are open with 939 occupants presently.
- **Ports:**
  - Port of Brunswick is at Port Condition Zulu, closed to all inbound and outbound traffic.
  - Port of Charleston is at Port Condition Zulu, closed to all inbound and outbound traffic.
- **Power:**
  - As of 5:30pm yesterday, 266,280 accounts were without power in South Carolina.



### *United States Virgin Islands*

The US Virgin Islands were hit strongly by Hurricane Irma and have significant damage to infrastructure and housing across the islands. In particular, the power grid on St. Thomas and St. John is not active for residential or commercial customers. The USVI Emergency Operations Center is at Full Activation.

4 fatalities have been reported in the USVI since Hurricane Irma's landfall.

- **Airports:**
  - Cyril E. King Airport on St. Thomas is open to military aircraft only however expects to open for commercial traffic on 9/12.
  - Delta Airlines is bringing in three authorized relief flights to St. Thomas with food, equipment, and federal / military personnel.
- **Gas / Fuel:**
  - There are still fuel shortages on the islands in critical locations, however the situation has greatly improved over the past few days. Tankers are re-supplying gas stations regularly in most areas.
- **Power:**
  - All customers on the islands of St. Thomas and St. John remain without power, through restoration crews have restored power to some critical infrastructure.
  - St. Croix currently has approximately 6,900 power outages.
- **Roads:**
  - There is significant debris on roads that is hampering restoration efforts.
  - St. John Island in particular has major damage on coastal roads, especially Coral Bay Road Route 107.
- **Shelters:** 7 open with 376 occupants, an increase from the day before.
- **Water:** 341,000 without potable water (281,000 due to power failure).
  - Drinking stations are being setup throughout the islands.
  - St. Thomas and St. John are under a boil order.





## Major Media Coverage

- [Atlanta Journal-Constitution: Irma now a tropical depression; power out for 1.3 million in Georgia](#)
- [Atlanta Journal-Constitution: Glynn County is shut down 'until further notice' after serious flooding](#)
- [Atlanta Journal-Constitution: Photos – Irma wreaks havoc in Georgia](#)
- [Orlando Sentinel: Hurricane Irma leaves trail of downed trees, high water, power outages in Florida](#)
- [Orlando Sentinel: Why didn't Hurricane Irma kill more Americans? Thank the meteorologists](#)
- [Orlando Sentinel: Pictures – Hurricane Irma cleanup in Orlando](#)
- [Orlando Sentinel: Special digital edition – Irma's wrath](#)
- [Miami Herald: Irma live updates: 13 million still without power in Florida](#)
- [Miami Herald: Irma could have been a lot worse for South Florida, but it's still not a pretty picture](#)
- [Miami Herald: 'Devastation' in the Florida Keys: Here's what happened when Irma struck](#)
- [Miami Herald: Did you leave Florida for Hurricane Irma? You don't have many options to return, yet](#)
- [New York Times: Flooding and power failures may plague state for weeks](#)
- [New York Times: A monster surge was expected. Here's why it never came](#)
- [New York Times: Watching 3 hurricanes from 22,000 miles above earth](#)
- [Washington Post: Irma leaves millions in the dark in Florida; Power could take weeks to restore for some](#)
- [Washington Post: Why Irma wasn't far worse – and how close things came to catastrophe](#)
- [Washington Post: Surveying the damage in the Florida Keys from the air](#)

## Local News Resources

- [Atlanta Journal-Constitution: Irma – Latest news, map, and resources](#)
- [Miami Herald: Irma's Aftermath, impact, and resources](#)



## Resources

- Weather / Flood / Storm Tracking
  - [National Hurricane Center – Irma](#)
  - [US Geological Service - Current Flood Mapping](#)
- Federal Response & Recovery
  - [FEMA – Home Page](#)
  - [FEMA – Hurricane Irma Information Page](#)
  - [FEMA – National Business Emergency Operations Center](#)
  - [DHS – Home Page](#)
  - [DHS – National Infrastructure Coordinating Center](#)
  - [USCG - Port Status](#)
- State/Territory Response & Recovery
  - Florida
    - [Florida Division of Emergency Management](#)
    - [Florida Shelter Information](#)
    - [Florida Power Outages](#)
    - [Florida Virtual Business Emergency Operations Center](#)
    - [Miami-Dade County – Hurricane Irma Updates](#)
    - [School Closure Information](#)
    - [Volunteer Florida](#) or call 1-800-FL-Help
  - Georgia
    - [Georgia Emergency Management & Homeland Security Agency](#)
    - [Traffic Alerts](#)
  - Puerto Rico
    - [Puerto Rico Emergency Operations Center \(EOC\)](#)
    - [Puerto Rico State Agency for Emergency and Disaster Management](#) (Spanish)
  - North Carolina
    - [North Carolina Emergency Management Division](#)
  - South Carolina
    - [South Carolina Emergency Management Division](#)
  - US Virgin Islands
    - [US Virgin Islands Territorial Emergency Management Agency](#)



## Private Sector Coordination

FEMA and the DHS National Infrastructure Coordinating Center (NICC) began private sector coordination calls last week for Hurricane Irma while standing up live on-line dashboards for persistent chat and resource sharing. Bryghtpath's leadership have attended every call on behalf of clients and shared information via situational updates.

## FOR ADDITIONAL COMMUNICATIONS & CRISIS SUPPORT ON A 24X7 BASIS:

Contact Bryghtpath at +1.612.235.6435 ext.9 or via email at [crisis@bryghtpath.com](mailto:crisis@bryghtpath.com) for immediate assistance to support your organization during a critical moment.

CONFIDENTIAL

**Information Cutoff: September 12, 2017 – 9:00am**

Copyright © by Bryghtpath LLC – All Rights Reserved. Bryghtpath © and the Bryghtpath logo are registered trademarks of Bryghtpath LLC in the United States and other countries.